

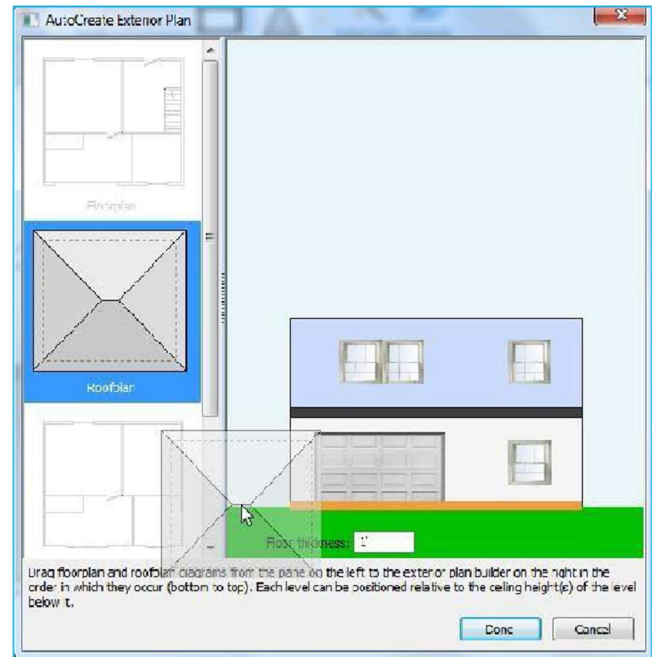
If a claim has a complete set of interior diagrams for the structure, its floorplan and roofplan may be used to generate a 3D diagram of the exterior using the AutoCreate tool.

1) To begin generating a 3D exterior diagram, open the ClaimExplorer and click the AutoCreate button on the Home Ribbon.

2) From the AutoCreate Exterior Plan window, drag the desired thumbnails from the left pane to the Window on the right side to create the structure.

3) Diagrams may be positioned properly by dragging them to the appropriate level, if not originally Built In the correct order. The orange bar will indicate where the component selected will be placed.

4) Click Done to generate the exterior diagram.



**NOTE:** Be sure to check the roofplan elevation. Notice the orange bar is indicating the roof will be placed on the ground. If the elevation the roof diagram has been set correctly, AutoCreate will automatically place the roof shape in accordance to its elevation off the ground. Also, staircases typically have a higher ceiling height than the surrounding floorplan, so floorplans above that level will need to be correctly placed.

### REARRANGING DIAGRAMS IN AUTOCREATE

If incorrectly placed, floorplans and roofplans may be rearranged within the Exterior Plan window, Drag the diagram to the appropriate position in the structure. To clear the right-hand panel and start over, drag placed diagrams from the right pane back to the left pane or select Cancel.

**NOTE:** Once an exterior has been generated using AutoCreate, any changes that are made to the existing floorplans or roofplan will not automatically be reflected on the exterior plan. The exterior plan must be re-generated using AutoCreate, deleting all line items from the estimate associated with the exterior plan. In addition, you cannot "Delete" an exterior built using AutoCreate. To start over, simply select the AutoCreate button again and the exterior will be recreated.